

Welcome

TO OUR CABIN



797 Silver Tip Drive
Big Bear Lake CA 92315
www.silvertipbigbear.com

Directory

1	Directory
2	At A Glance
3	About The Cabin
4	Meet The Host
5	Emergency Contacts
6	House Rules
7	City Of Big Bear Lake Rules
8	Neighborhood
9	Getting Around
11-14	Things To Know
15-18	Things To Do
19-23	Mountain Trail Maps
24-27	Hiking Trails
28	Services
29-32	Places To Eat & Drink
33	Before You Go
34	Thank You

At A Glance

Wifi

NETWORK

possum

PASSWORD

stupidcat

Address

797 Silver Tip Drive
Big Bear Lake CA 92315

Info

MAX. OCCUPANCY

4 Adults

MAX. VEHICLES

2

Contacts

24/7 AGENT

Nick / 909-436-0526

OWNER

Jacqi / 310-968-4765
jacqicallaghan@gmail.com

Check In

4.00 PM

Check Out

11.00 AM



About The Cabin

Welcome to 797 Silver Tip Drive, Big Bear Lake!

Our cabin has been lovingly renovated in 2023 with a designers attention to detail and comfort. Everything is modern and new, from the flooring and paint, to the cabinetry and fixtures. Stylishly curated furnishings, linens, kitchen supplies and personal care items have been sourced with you, our guests, in mind.

With two bedrooms, a bonus game room, one & a half baths, laundry/mudroom, fully stocked kitchen, open dining and living room with soaring vaulted ceilings and woodburning fireplace, as well as large wraparound deck with hot tub, fire pit, and EV charger, you have all you need for a cozy, relaxing stay.

Meet The Host

Hi, I'm Jacqi, the owner of Silver Tip Big Bear. I'm so glad you choose to stay in my cabin! I am Australian born and raised, but lovingly nurtured by my adopted USA for the last 25 years.

Previously from the corporate world and raising my three kids, I am now ready for my next chapter. Home design, hosting and travel are my passions and I am grateful for the opportunity to share that passion with you. I hope you enjoy my home and look forward to welcoming you back again soon.



Emergency Contacts

Hospital:

Bear Valley Community Hospital
41870 Garstin Dr
Big Bear Lake, CA 92315
(909) 866-6501
Emergency: Dial 911

Police:

Big Bear Lake Patrol Station
477 Summit Blvd
Big Bear Lake CA 92315
(909) 866-0100
Emergency: Dial 911

Fire:

Big Bear Fire Department
41090 Big Bear Blvd
Big Bear Lake CA 92315
(909) 866-7566
Emergency: Dial 911

Electricity:

Bear Valley Electric Service
42020 Garstin Dr
Big Bear Lake CA 92315
1-800-808-2837

Water:

City of Big Bear Lake, Department of
Water & Power (DWP)
41972 Garstin Dr
Big Bear Lake CA 92315
909-866-5050

Gas:

Southwest Gas
877-860-6020
Emergency: Dial 911



House Rules

NO PETS

Please no pets unless previously approved by the owner.

NO SMOKING

Please no smoking or vaping inside the house.

NO PARTIES

Our house rules, as well as the City of Big Bear Lake regulations, require that no parties be held at our home.

REPORT ANY DAMAGES

Please report any damages to us as soon as possible.



Our home is your home!

City of Big Bear Lake Rules

PARTIES

No parties or events allowed.

MUSIC

No amplified music should be heard beyond the property line
24/7. \$500 fine for violation.

STREET PARKING

No parking allowed on the street 24/7. \$500 fine for violation.

DOGS

No barking dogs are to be left unattended at the property.
\$500 fine for violation.

OCCUPANCY & VEHICLES

Maximum occupancy and vehicle limits to be followed. \$500
fine for violation.

HOT TUB

No hot tub use between 10pm and 7am. \$500 fine for
violation.

ASHES

Ashes from fireplace to be stored in the provided 5 gallon ash
bucket with water or left in the fireplace.

Neighborhood

Silver Tip Big Bear is located in the Moonridge neighborhood of Big Bear Lake. It is a hillside residential area on the south end of the Big Bear Valley and is surrounded by national forest. Moonridge is home to Bear Mountain Ski Resort, Bear Mountain Golf Course, Big Bear Alpine Zoo and the Moonridge Corridor.

Bear Mountain Resort- 0.9 Mile/3 Min Drive

Snow Summit Resort - 1.9 Miles/6 Min Drive

Snow Valley Resort - 14.3 Miles/30 Min Drive

Bear Mountain Golf Course - 0.9 Mile/3 Min Drive

Big Bear Lake Village- 3 Miles/8 Min Drive

Big Bear Lake Marina - 3.5 Miles/9 Min Drive

Big Bear Alpine Zoo - 0.5 Mile/5 Min Walk/2 Min Drive

Grocery Store - Vons - 2 Miles/5 Min Drive

Grocery Store - Stater Bros - 2 Miles/5 Min Drive

Pharmacy - Walgreens - 1.4 Miles/4 Min Drive

Pharmacy - CVS - 1.7 Miles/4 Min Drive

Big Bear Airport- 2.7 Miles/7 Min Drive



Getting Around

FREE BIG BEAR TROLLEY

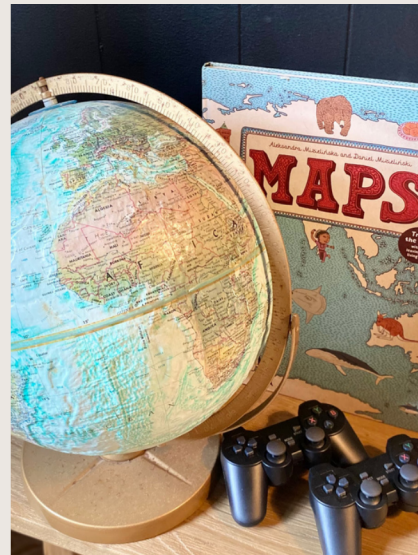
All transit within the Big Bear Valley is completely free for all riders. Three convenient routes are on offer with access to most visitor attractions and amenities in Big Bear, including the ski resorts, Boulder Bay, The Village, supermarkets and the Airport. The Blue Line has stops in Moonridge. Go to mountaintransit.org for timetables and route maps.

TAXI'S & RIDESHARE

Uber and Lyft both operate in Big Bear, as well as Big Bear Cab Company. Call (909) 866-8294 to book a cab.

Parking

The driveway can park two vehicles. The City of Big Bear Lake does not allow any street parking.



Things To Know

INSTRUCTION MANUALS

All Instruction manuals for appliances and electronics can be found by scanning the QR code on the appliance which will direct you to the instruction manual on our website. Alternatively go directly to our website www.silvertipbigbear.com, or find hard copies in the bottom draw of the utility draw unit in the downstairs bedroom closet.

ROKU SMART TVS

This home has two Roku Smart TVs with Guest Mode for you to enjoy. The remote control for the living room TV can be found in the white ceramic box on the coffee table, the game room remote can be found in the basket on the bench in the game room. To operate, turn on the Roku device, select your check out date, and start streaming! All of your logins will erase automatically on the checkout date you choose.

Roku also has hundreds of free movies and TV shows.

RETRO GAMING SYSTEM & PERSONAL GAMING CONSOLES

The upstairs Roku Smart TV in the Games Room is installed with a Retro Gaming System. To operate, turn on the Roku device, select your guest check out date in Guest Mode. When in Guest Mode, select "Home" menu where you can either select "Game Console" to play the Retro Games, or connect your own gaming console via the HDMI cable provided and choosing "HDMI 1". Make sure the gaming controllers are switched on.

EV CHARGER

A Chargepoint Level 2 EV Charger is located near the driveway at the base of the stairs leading up to the house. It has a combination lock to keep it secure. If you have an EV and would like to utilize the charger, please contact the property manager, Nick on 909-436-0526 for the lock code.

PROPANE GAS TANKS

Propane gas tanks are used for the outdoor grill and the outdoor fire pit. Please ensure that the tanks and completely turned off after use. If you run out of propane, there is an extra propane tank located in the laundry room. Please let us know if there are empty tanks so we can refill before the next guest.

FIREPLACE, FIREWOOD & ASHES

For your convenience, starter firewood for your first night is provided next to the fireplace, and firestarter bricks are in the ash bucket. Please supply your own firewood and firestarter when the starter supply has been used. The firewood stack outside the cabin is the owners personal supply. Ashes from the fireplace can be left in the fireplace or stored in the provided 5 gallon ash bucket with water.

Things To Know

LIGHT & LAMP SWITCHES

The light and lamp switches in an older house can be a little confusing. See below for some clarification.

Living Room. The on/off switch for the pendant lamp in the living room is at the top of the pendant arm near the lightbulb. It is directly plugged into a power outlet.

Dining Room. The power switch for the pendant lamp above the dining table is located in the kitchen, above the kitchen bench closest to the front door, and is the middle switch. It should be labelled.

Downstairs Bedroom. The bedside table lamp is powered on via the wall power switch on the left as you walk inside the door. When the power is on, a blue light will appear on the bedside lamp base. Press and hold the power symbol to switch on the light and keep pressing for various light variations. The on/off switch for the floor lamp in the downstairs bedroom is at the top of the lamp stand and is directly plugged into a power outlet.

Upstairs Bedroom. The bedside table lamp is plugged directly into a power outlet. When the power is on, a blue light will appear on the bedside lamp base. Press and hold the power symbol to switch on the light and keep pressing for various light variations. The power switch for the floor lamp in the upstairs bedroom is on the wall to the left as you walk in the door. The on/off switch for the floor lamp is at the top of the lamp stand.

Games Room. The power switch for the floor lamp in the games room is on the wall to the right as you walk in the door. The on/off switch for the floor lamp is at the top of the lamp stand.

Outdoor String Lights. The power outlet for the outdoor string lights is on the outside wall of the house, near the corner where the outdoor rockers are located. They are set to a timer from dusk til 10pm.

MAKE-UP REMOVERS

For your convenience and the longevity of our towels and linens, you will find individually packaged make-up removers in each bathroom cabinet.

KIDS DINNERWARE

If you are travelling with little ones, you will find an array of kids unbreakable dinnerware - cups, plates, cutlery, etc - in the kitchen cupboard above the microwave oven.

Things To Know

CENTRAL HEATING THERMOSTAT

The central heating thermostat is located in the downstairs bedroom on the right hand wall as you walk in the door. During summer it is set to the off position, and in winter it is set to 55 degrees when there are no guests in the house.

COOLING FANS

Two bladeless cooling fans can be found in the downstairs bedroom closet. The remote controls for the fans are located in the white ceramic box on the coffee table.

EXTRA LINENS & QUILTS

If required, you can find extra linens in the linen closet in the downstairs bedroom. There are also extra comforters on the top shelf of the downstairs bedroom closet.

PANTRY & PERSONAL CARE ITEMS

Public Goods is our primary supplier of pantry and personal care items. They are our choice essentials for a healthy, sustainable home. Method is our primary choice for earth friendly cleaning products. Please use and enjoy these products during your stay. However, if you choose to take them home, the costs will be transferred to you.

SHEEPSKINS FOR OUTDOOR SEATING

Cozy Sheepskins for the outdoor rockers can be found in the downstairs bedroom closet in a zippered storage bag or displayed on the indoor dining benches.

UTILITY DRAWERS

Located in the downstairs bedroom closet is a utility drawer unit. These drawers contain additional essentials that are for the convenience of our guests when visiting the cabin. They include stationery, chargers & cords, citronella candles, matches, tealight candles, batteries, toolkit, torches, umbrellas, sewing kit, local brochures and instruction manuals. Please replace items in the drawers after use.

LAUNDRY/MUDROOM

The laundry/mudroom is located underneath the house. The door code will be the same as your front door code. For your convenience you will find a standalone washing machine and dryer, laundry basket and laundry detergent. There are also storage hooks for hanging your outdoor gear, along with boot tray, sleds, snow tubes, a snow brush and scraper as well as a snow shovel, for our guests use.

Things To Know

HIGH ALTITUDE TIPS

The base of Big Bear Mountain Resort is 7,000 feet above sea level. Visitors may experience some minor side effects due to high elevation. Minimize these side effects with these tips.

Altitude Adjustment. When you first arrive, acclimatize yourself for a period of time prior to beginning strenuous activities. At high elevations, the atmosphere is thinner and there is less oxygen and less humidity available to you than at sea level. This can result in a number of symptoms such as muscle fatigue, insomnia, mild headaches or slight shortness of breath.

Avoid sunburn. Our thin atmosphere filters out only a minimum of the sun's ultraviolet ("UV") rays and can result in severe sunburn. So be sure to take adequate precautions to protect your eyes and skin. During high-exposure activities such as spring skiing, those with fair skin may experience sunburn after only two hours of sun exposure, even after applying maximum sunscreen protection. Parents should be especially careful with young children, and apply a generous amount of sunscreen prior to any outdoor activities.

Keep warm. At this elevation, the weather can change quickly. Winter or summer prolonged exposure to the elements can cause serious problems. Children are not always aware that they are becoming too cold. Parents should watch for red noses and red ears. If this occurs, bring the child in from the cold, remove wet clothes and warm the child and affected areas immediately. Take frequent breaks from the cold or heat. It is wise to layer your clothes, no matter what the season. A t-shirt, wool sweater, nylon windbreaker with hood and a bottle of water are basics for just about any summer activity.

Eat lightly and drink plenty of liquids. You may tend to become dehydrated more quickly at high altitude than at sea level, so drink plenty of water and other fluids (8-10 glasses daily). You should also avoid drinking alcoholic beverages for the first 24 hours of your stay.

Protect your eyes from high altitude sun & wind. It is important to use proper UV protection for your eyes. The surface of the snow or water can act as a reflector of UV rays and can generate a great deal of UV exposure to the eyes. Equip yourself and your children with UV sunglasses or goggles. Failure to wear proper eye protection can result in an actual burn of the eye's surface– a painful condition requiring medical treatment. Wind and blowing dust can wreak havoc on sensitive eyes so make sure to have protection even when the weather seems calm.

Listen to your body. If you experience symptoms such as headache, insomnia and/or fatigue, you may have a mild form of "altitude sickness." These symptoms are a warning to decrease your activity level. If symptoms persist or begin to worry you, don't hesitate to go to the Emergency Department.

Things To Do

BIG BEAR MOUNTAIN RESORT

Big Bear Mountain Resort is Southern California's year-round home for alpine good times with three mountains – Snow Valley, Snow Summit, and Bear Mountain – offering something for outdoor enthusiasts of all ages and abilities. Call 844-462-2327 or www.bigbearmountainresort.com.



BIG BEAR DISCOVERY CENTER

The Big Bear Discovery Center is open but still in the process of a remodel. Stop by to enjoy weekly programs, eco-tours, and special events. Enjoy outdoor concerts, theater productions, and nighttime interpretive programs in the Discovery Center Amphitheater. Call 909- 82-2790 or www.mountainsfoundation.org.

GOLD RUSH MINING ADVENTURES

The Gold Rush Mining Company is not to be missed! It has two running sluices, dig pits, cosmic cave exploration and a variety of activity options as well as the Gold Mine Gift Shop and the Glitter Gulch Ghost Town. Call (909) 866-5678 or www.goldrushminingco.com.

BEAR VALLEY FARMERS MARKET

Enjoy fresh fruits, vegetables and flowers all summer long when you shop arts, crafts, health products and a huge variety of collectibles at the Big Bear Valley Farmer's Market every Tuesday 8.30am-1pm at the Big Bear Convention Center, April thru September.

ALPINE SLIDE AT MAGIC MOUNTAIN

Year-round fun for the whole family in Big Bear.

Featuring Southern California's only authentic bobsled experience. In the summer there is a cool water slide and in the winter there is plenty of fun snow play. Call 909-866-4626 or www.alpineslidebigbear.com

Things To Do

GRIZZLY RIDGE TUBE PARK

The Grizzly Ridge Tube Park is fun for everyone. Take a magic carpet to the top and slide down as fast as you can in one of our snow tubes. Call 844-462-2327 or www.bigbearmountainresort.com.

ACTION ZIPLINE

Live it up Big Bear style with the perfect outdoor experience for everyone 8 years and older. The 9 line course is located just outside of town with panoramic views of the forest and Johnson Valley. Call 909-866-0390 or www.actiontoursocalifornia.com.

ACTION SEGWAY

Glide around town on Segway X2 PTs while you explore Big Bear with a local tour guide. The 2 hour tours give you the opportunity to see several unique areas in town. Call 909-866-0390 or www.actiontoursocalifornia.com.

BIG BEAR SPEEDWAY

Experience the thrill of straight aways and tight turns as you hone your racing skills. Call (909) 585-0075 or www.bigbearspeedway.com.

BIG BEAR ROPES COURSE

Take your family on an invigorating aerial adventure that will have you balancing on ropes, crossing bridges and climbing through obstacles, all from the safety of a climbing harness. Call 909-585-0075 or www.bigbearsnowplay.com.

BEAR MOUNTAIN GOLF COURSE

Bear Mountain Golf Course is a great nine-hole experience for golfers of all ability levels. Enjoy the benefits of playing at altitude with the sun-splashed San Bernardino Mountains as your backdrop. Call 909-585-8002 or www.bigbearmountainresort.com.

BIG BEAR ALPINE ZOO

The Big Bear Alpine Zoo is a rehabilitation facility offering injured and orphaned wild animals a safe haven, either temporarily while they heal or permanently as they are unable to survive on their own. Call 909-584-1299 or www.bigbearzoo.org.

SUMMIT BIKE PARK

When the snow melts Big Bear Mountain Resort undergoes an incredible transition from world-class ski resort to mountain biking mecca, featuring a lift-served, gravity fed bike park at Snow Summit, with trails and terrain for riders of all ages and ability levels. Call 844.GO2.BEAR or www.bigbearmountainresort.com.

BIG BEAR HIKING ADVENTURES

We love to hike and want to take you along with us on a great Big Bear Lake adventure with an experienced guide. Call 909-878-0552 or www.bigbearhikingadventures.com.

BIG BEAR SNOW PLAY

Come play on the largest snow play hill in the San Bernardino Mountains. Open November through April. Call 909-585-0075 or www.bigbearsnowplay.com.

Things To Do

BETTY'S BUGGIES

Join Betty's Buggies for fun filled adventures in 60s / 70s style dune buggies around some of the most beautiful locations in Big Bear. Our easy-to-drive buggies are full of personality, so you can follow our expert guides in style. Call (424) 877 1187 or www.bettysbuggies.com.

THE BOWLING BARN

Let's Bowl! The Bowling Barn's 16-lane facility is equipped with a state-of-the-art bowling scoring system as well as seating and nightly Glow Bowling! Bumpers are available for children to ensure that every ball hits the pins. Call (909) 878-2695 or www.bowlingbarn.com.

VILLAGE THEATER NORTH

Located in The Village on Pine Knot Rd, Village Theaters features four screens with the latest box office hits. Escape and enjoy a day at the movies with friends and family. Call (909) 866-5115 or www.villagetheaters.com.

HELICOPTER BIG BEAR

Soar through and witness the beauty of the San Bernardino Mountains and Big Bear area, with stunning views in all directions from the vantage point of a helicopter cockpit. Peaks, canyons, lakes, desert and so much more. Call 909-585-1200 and www.helicopterbigbear.com.

BIG BEAR CHARTER FISHING

Over 20 years guide experience on Big Bear Lake. We provide fishing options for everyone...Trout, Bass, Catfish and Carp. Kids are our specialty and we're pet friendly. Drinks & Snacks provided. Call 800-475-3166 or www.bigbearfishing.com.

BIG BEAR OFF ROAD EXPERIENCE

Big Bear Off-Road Experience lets you take the wheel to explore the ridges, canyons, and meadows of the beautiful San Bernardino Mountains in a fully equipped Jeep or UTV. A lead guide stays in contact with your group during the whole tour. Call (909) 420 - 5828 or www.bigbearoffroadexperience.com.

MOUNTAIN ROOM ESCAPES

Mountain Room Escapes offers family friendly room escape adventures. You and a team of up to 8 will enter one of our mountain themed rooms filled with locks, puzzles and challenges. Solve the puzzles in an hour and figure out how to escape! Call (877) 584-6427 or www.mountainroomescapes.com.

FISH BIG BEAR CHARTER SERVICE

Catch hard fighting-great eating rainbow trout. Your guide is a master angler who has over 40 years experience fishing Big Bear Lake. All fishing tackle, soft drinks, and water provided. Great for young children and pet friendly. Located at Big Bear Marina. Call 909-255-2834 or www.fishbigbear.net.

CANTRELL FISHING GUIDE SERVICE

Fish with Big Bear's finest guides. Enjoy catching beautiful rainbow trout from a comfortable, roomy 24ft pontoon boat. Call 909-585-4017 or www.bigbearfishing.net.

BIG BEAR HISTORY MUSEUM

The Big Bear History Museum preserves the exciting and romantic history of this high mountain country with exhibits that include the Serrana Indian period to the present time. Call 909-585-8100 or www.bigbearhistory.org.

Things To Do

HOLLOWAY'S MARINA

Holloway's Marina has everything you need for vacation time. The marina welcomes all with pontoon and fishing boat rentals, kayak and SUP rentals, fishing charters and waterski lessons, a tackle shop, our famous Pirate Ship lake cruise, and much much more! Call (909) 866-5706 or www.bigbearhollowaysmarina.com.

BIG BEAR MARINA

Big Bear Marina offers mountain lake fishing and water sport adventures. Cruise the lake on a jetski, or in one of our comfortable pontoon boats, or spend the day fishing from one of our outboard fishing boats. Call 909-866-3218 or www.bigbearmarina.com.

NORTH SHORE LANDING

With a large selection of watersports and boat rentals, including everything from leisurely pontoon boats to invigorating tow sports and waverunners, North Shore Landing can help you find your fun on Big Bear Lake! Call (909) 403-4053 or www.bigbearboating.com.

BIG BEAR WATERSPORTS SCHOOL

Big Bear Watersports School is all about fun in the sun! We are dedicated to getting people out on the lake and showing them a good time! We are a charter boat service that offers lessons for various watersports. Call 909-229-0035 or www.bigbearwatersports.com.

MISS LIBERTY PADDLEWHEEL BOAT TOURS

Cruise beautiful Big Bear Lake on Miss Liberty Lake Tours. Fully narrated 1 ½ hour tours, spring thru fall. Departs from Pine Knot Marina. Call 909-866-8129 or www.pineknotmarina.com.

PLEASURE POINT MARINA

Pleasure Point Marina remains a favorite destination for family fun on Big Bear Lake. Rentals include Pontoon Boats, Kayaks, Peddle Boats, Fishing Boats, stand up paddle boards, 8 person SUP & Jet Skis. Call 909-866-2455 or www.pleasurepointmarina.net.

PINE KNOT MARINA

Where the village meets the lake! Pontoon and fishing boat rentals, lake tours, and jet ski rentals. Boats and jet ski rentals daily from April to November. Call 909-633-7511 or www.pineknotmarina.com.

CAPTAIN JOHN'S FAWN HARBOR & MARINA

Captain John's Fawn Harbor offers the largest selection of rental equipment including canoes, kayaks, paddleboards, and boats. Call (909) 366-0491.

DESIGNATED WAKESPORTS

From wake surfing, waterskiing, wakeboarding, wakeskating, and kneeboarding to everyone's favorite activity tubing! Located at Pleasure Point Marina. Call 909-556-3345 or www.designatedwakesports.com.

BIG BEAR PIRATE SHIP

The Big Bear Pirate Ship is a must visit each time you are in Big Bear Lake. We offer daily tours of the lake featuring live entertainment, and our own authentic Pirates. Call 909-866-5706 or www.bigbearhollowaysmarina.com.

BIG BEAR QUEEN LAKE TOURS

Big Bear Queen is a sixty passenger paddlewheel boat available for lake tours, sunset cruises and charters, sailing daily from May through October. Call 909-744-4948 or www.bigbearqueen.com.

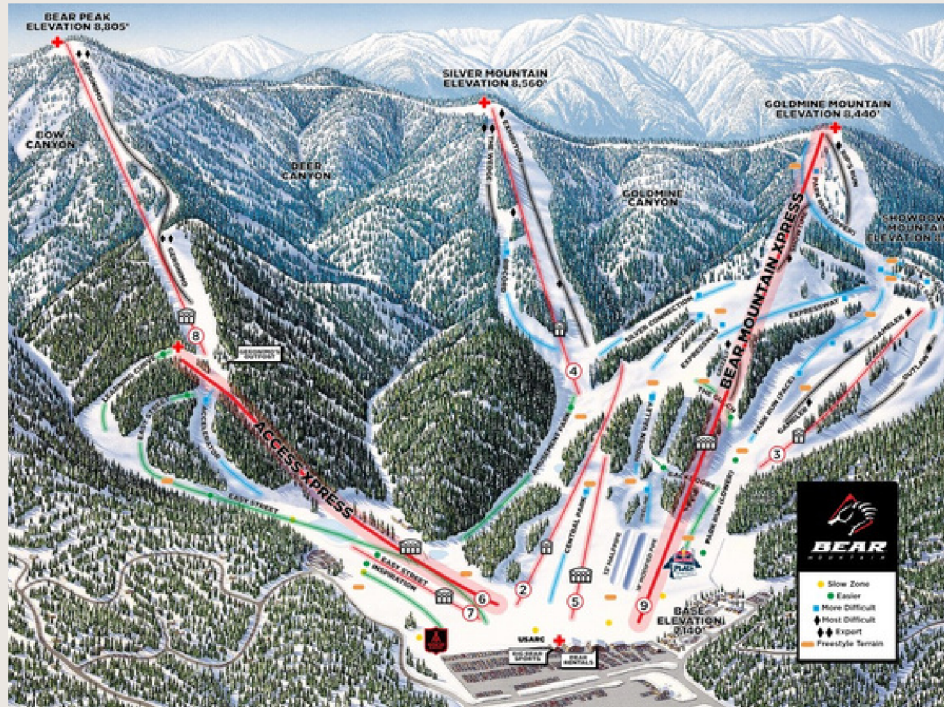
Snow Summit

WINTER TRAIL MAP



Bear Mountain

WINTER TRAIL MAP



Snow Valley

WINTER TRAIL MAP



SUMMER TRAIL MAP

SUMMER TRAIL MAP

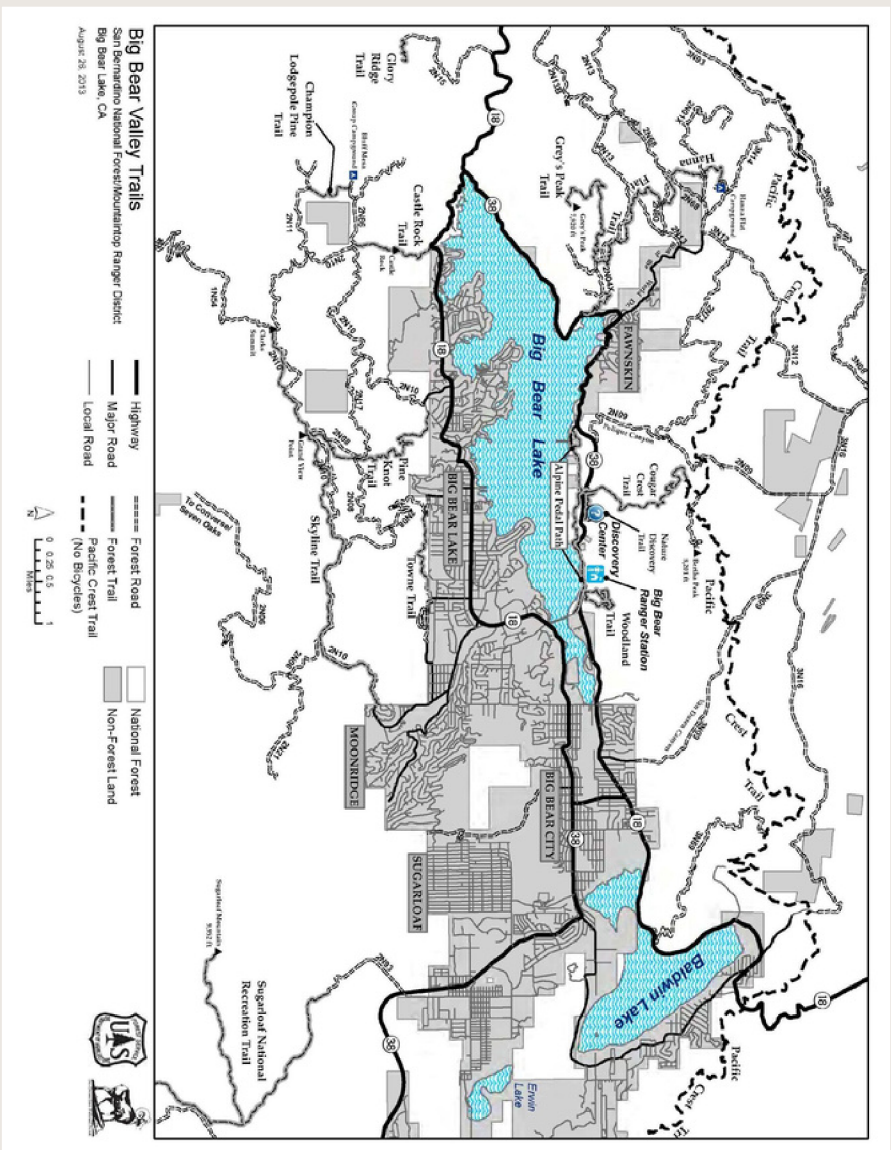


Snow Valley

SUMMER TRAIL MAP



Big Bear Hiking Trails



Big Bear Hiking Trails

Alpine Pedal Path

Very Easy 2.5 miles One Way

This asphalt path meanders along the sparkling north shore of Big Bear Lake from Stanfield Cutoff to the Solar Observatory and Serrano Campground. Although not flat by any means, its' ups and downs are fairly gentle. In the fall of 1998 the path was extended and includes a pedestrian tunnel under Hwy 38 to the Cougar Crest Trail parking lot. The new extension continues east 0.6 of a mile and connects with the **Big Bear Discovery Center**. Hikers can find water, restrooms and expert advice on all varieties of recreation in the San Bernardino National Forest at the Discovery Center. Seasonal parking is also available at Juniper Point Picnic Area and Meadow's Edge Picnic Area with an Adventure Pass or Interagency Pass.

Nature Discovery Trail (1E51)

Easy 0.5 miles Loop / Elevation Gain: 100 feet

The Nature Discovery Trail is a 0.5 mile loop trail that gently winds its way through the forest behind the **Big Bear Discovery Center**. The trail is complete with 3 benches to stop and take in the fresh air along with peekaboo views of Big Bear Lake and Mt. San Geronio.



The Woodland Trail (1E23)

Easy 1.5 miles Loop / Elevation Gain: 300 feet

This path starts and ends at the trailhead off Hwy 38, 0.2 miles west of Stanfield Cutoff. It is an interpretive trail with 16 posted markers, ideal for families with young children. By picking up a pamphlet at the entrance, hikers can take themselves on a self-guided tour to learn about the botany, wildlife and geology of this unique area which is described as a dry-woodland.

Champion Lodgepole Pine Trail (1W11)

Easy 0.3 miles One Way to Bluff Mesa Trail (1W16) / Elevation Gain: 100 feet

Easy Additional 0.4 miles One Way / Elevation Gain: 300 feet

The Champion Lodgepole Pine Trailhead is located on the south side of Big Bear Lake. From Hwy 18, turn south on Mill Creek Road which turns into Forest Road 2N10. Forest Service Road 2N10 is a dirt fire road. When driving Forest Service fire/dirt roads, caution should be taken for uneven road surfaces, rocks and dips, high clearance vehicles are recommended. Continue on FS Road 2N10 for 4.5 miles, turn right on 2N11 and continue for 1 mile to the trailhead. Then it's a gentle walk down a path along a small stream for 0.3 of a mile. The trail ends at the Champion Lodgepole Pine, one of the largest known Lodgepole pines in California. Adjacent to the Champion Lodgepole Pine is a beautiful meadow, a tapestry of wildflowers in the spring. (So please stay on the trails.) A companion path is the **Bluff Mesa Trail** (No Bicycles) which begins where the Champion Lodgepole Pine Trail ends, and travels in a northerly direction for 0.4 of a mile, ending at the popular Bluff Mesa Group Camp. This continuation trail is easy and recommended for families who would like a leisurely walk through beautiful stands of stately Jeffrey Pine. These two trails are accessible when Forest Service Roads 2N10 and 2N11 are open to motorized vehicles.

Towne Trail (1E27)

Easy to Moderate 3 mile Round Trip / Elevation Gain: 100 feet

This trail begins on Forest Road 2N08 east of Knickerbocker Road between Snow Summit Ski Area and Big Bear Lake Village. From HWY 18, turn south on Knickerbocker Road. Continue on Knickerbocker for 0.5 mile to beginning of Forest Road 2N08 on the left. Park here when gate is closed (do not block gate) or drive up Forest Road 2N08 and park in a large turnout just before trailhead. Town Trail is relatively flat with a few intermittent stream crossings. Look for the large Incense Cedar and White Fir trees that line the trail, they enjoy the abundant water and shade found on the south side of Big Bear Lake.



This symbol indicates that parking at the trailhead requires an Adventure Pass or Interagency Passes.

Big Bear Hiking Trails

Castle Rock Trail (1W03)

Moderate to Difficult / 2.4 miles Round Trip / Elevation Gain: 700 feet

The most popular trail in the Bear Valley begins 1.1 mile east of the dam Hwy 18. There is very limited parking on the north side of the highway 50 yards east of the trailhead. At the top of the ridge is an impressive granite rock out-cropping and the source of many tales and local folklore. If you trust your rock climbing skills and can climb your way to the top of the rocks from the north side, the view of the lake is wonderful. The best part of this hike is that it's downhill all the way home.



Pineknot Trail (1E01)

Moderate to Difficult / 6 miles Round Trip / Elevation Gain: 900 feet

The Pineknot Trail begins at the Aspen Glen Picnic Area and climbs south until it reaches the aptly named Grand View Point, altitude 7,784 feet. For the first 1 ½ miles the hiker shares the trail with equestrian and mountain bike traffic, while they wind their way up through stands of white fir and Jeffrey pine. Serious hikers make the 6 mile round trip in 3 hours or less, while a family who plans to picnic at Grand View Point should plan on spending half the day to leisurely enjoy the forest, the mountains and a great view of Big Bear Lake.



Gray's Peak Trail (1W06)

Moderate to Difficult / 7 miles Round Trip / Elevation Gain: 1000 feet

This trailhead is located on the west side of HWY 38 0.6 of a mile west of Fawnskin, across from the Grout Bay Picnic Area. (This trailhead is in the center of a bald eagle wintering habitat area and is closed to all public use from November 1 to April 1.) The trail climbs westerly for 0.5 mile until it merges with Forest Road 2N04X. Turning north (right), 2N04X joins Forest Road 2N70 after a ¼ mile (go straight, do not turn left) and continue onto Gray's Peak Trail, 200 yards on your left. From there it is 2 ¾ miles to the top of Gray's Peak.

Hanna Flat Trail (1W05) to Gray's Peak Summit

Moderate 7.8 miles Round Trip / Elevation Gain: 50 feet

Hanna Flat Trail begins between campsites 54 & 55 in Hanna Flat Campground, it also shares the Gray's Peak Trailhead on HWY 38. The trail climbs from the campground through part of the forest that burned in 2007 before it meets Gray's Peak Trail. At the intersection of Forest Road 2N70 turn left, the trail to Gray's Peak will be 50 yards down the road on the right. It is 2 ¾ miles to the top of Gray's Peak.



Cougar Crest Trail (1E22)

Moderate to Difficult 2 miles One Way to Bertha Peak / Elevation Gain: 750 feet

Difficult 1.5 miles One Way / Elevation Gain: 1360 feet

This trail begins at the intersection of Forest Road 2N10 and 2N06. Built within a firebreak, the trail winds through stands of Jeffrey Pines, manzanita and buckthorn as it parallels Forest Road 2N10. A cross-country trail with few long hills and descents, it is a multi-use trail designed for hikers, mountain bikers and equestrian riders. The Skyline Trail can be used to access many of the other trails within the South Shore Trail System.



This symbol indicates that parking at the trailhead requires an Adventure Pass or Interagency Passes.

Big Bear Hiking Trails

Sugarloaf National Recreation Trail (2E18)

Difficult 10 miles Round Trip / Elevation Gain: 1200 feet

From the south end of Stanfield Cutoff on Big Bear Blvd. Hwy 38 continue for 6 miles heading south toward Redlands. Turn right on 2N93, at the intersection of Hwy 38 and Hatchery Road. Follow this dirt road until you reach the Sugarloaf Trail sign and park in the turnout. The first 2 miles of trail is a rough and rocky road, at times following Green Creek. Although the view from the summit of Sugarloaf Mountain is mostly obscured by trees, you have climbed to an altitude of 9,952 feet, the highest point in the Big Bear Valley.

Skyline Trail (1E12)

Moderate to Difficult / 8.5 miles One Way / Elevation 160 feet

A well-maintained path through a wide variety of natural environments distinguishes the Cougar Crest. It starts 0.6 of a mile west of the Discovery Center on HWY 38. (You can park for free until 5:00 pm at the Big Bear Discovery Center and walk the 0.6 mile to the trailhead.) In the first mile there's only a gentle uphill increase, but within the second mile you'll realize that you're gaining serious altitude. The Cougar Crest Trail ends at the junction of the Pacific Crest Trail (No bicycles on PCT). To Bertha Peak: Continue east (right) on the Pacific Crest Trail to a dirt maintenance road. Continue 0.6 on maintenance road until you reach the summit of Bertha Peak (8,201 feet); easily recognized by the large collection of communication equipment at the top. From the summit there's a near 360 degree view of the Bear Valley, Holcomb Valley, even the Mojave Desert.

Glory Ridge Trail (1W02)

Very Difficult – not recommended / 2 miles Round Trip / Elevation Gain: 1500 feet

The turnout to the trailhead is 2 miles west of the Big Bear Lake dam on Hwy 18, just after the Hwy reduces from 2 lanes to 1 lane. Drive down rutted Forest Road 2N15, continue passed a dirt road on a right staying on 2N15. At the fork in the road continue right and park on a knoll at the road's end. Follow the trail ¼ mile to the trailhead, marked by a "Fishermen" sign. Now the trail becomes very strenuous, dropping 1,100 feet in 1 mile! Climbing down is treacherous, climbing out is exhausting. High clearance vehicles are recommended.



This symbol indicates that parking at the trailhead requires an Adventure Pass or Interagency Passes.

Services

HUGS + WAGS BABYSITTING & PETSITTING

On-demand babysitter's and pet sitters in Big Bear Lake. First Aid and CPR certified, Advanced Childcare certified, caregiverlist certified, LiveScan verified and printed, real-time booking calendar. We come to your home or vacation rental. Call 877-4-HUGSWAGS or www.hugswags.com.

ELEVATIONS DAY SPA

Big Bear's only full service day spa. Massage Therapy, Facials, Advanced Skincare, Hair Salon, Nail Salon, Body Treatments, Waxing, Tinting, Lash Extensions, Medical Aesthetics, Spa Packages. Call 909-866-7405 or www.elevationsdayspa.com.

SPA-TIQUE BY MARGO

Margo has been in the spa industry since 2012 as a massage therapist and an esthetician with a wide range of massage methods and techniques. Mobile services also available. Call (310) 990-9552 or www.spatiquebymargo.com.

HIDEAWAY SPA SALON

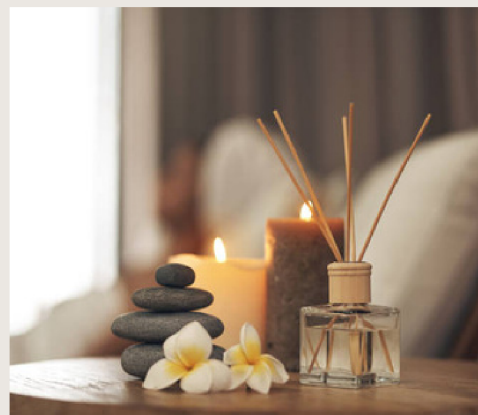
At Hideaway our concept is based on the belief that our clients' needs are of the utmost importance. Our highly trained staff is dedicated to providing you with service that exceeds your expectations. Call 909-878-2606 or www.hideawayspasalon.com.

GETBOARDS RIDE SHOP

Rent your kayak, paddleboard, cruiser bike, mountain bike, electric bike, snowboards and skis at Getboards Ride Shop. Call 909-878-3155 or www.getboards.com.

MOUNTAIN YOGA CENTER

Daily classes. Schedule online. Call 909-375-1552 or www.mountainyogacenter.com.



MOUNTAIN MOBILE MASSAGE & SPA

We have an excellent reputation as the best massage in Big Bear, California, for over 21 years. Mountain Mobile Massage & Spa has amazing, experienced, licensed massage therapists who love what they do. Call (909) 800-8103 or www.bigbearmassage.com.

ALTITUDES MASSAGE & SPA

Altitudes has raised the bar in Big Bear. Not only with the level of expertise, but also with the beautiful spa itself. The effect of our massages and facials are deeply relaxing, cleansing, and renewing. You will truly let go of your tension, and feel like a new person. Call (909) 747-9696 or www.altitudesmassage.com.

PADDLES AND PEDALS

Paddles and Pedals offer bikes, kayaks, canoes and stand up paddle boards for rent. Located on the north shore of Big Bear Lake, we provide very easy access to the lake, the pedal path or the mountain bike trails. Call 909-936-2907 or www.paddlesandpedals.com.

GOLDSMITHS SPORTS

For summer adventures, rent your electric bikes and mountain bikes. For winter snow play, come to us for your ski and snowboard rentals. Call 909-866-2728 or www.goldsmithssports.com.



Places to Eat and Drink

BIG BEAR LAKE BREWERY

Big Bear's own craft brewery invites you to enjoy their ice cold pours available only at their brewery. Pair your beer with one of the Brewery's hearty burgers, pizzas, or sandwiches.

40827 Stone Rd, Big Bear Lake, 909-878-0283

THE HIMALAYAN

Serving up authentic Indian and Nepalese food, this menu is vast and caters to meat eaters and vegetarians/vegans.

672 Pine Knot Ave #2, Big Bear Lake, 909-878-3068

THE BONEYARD BAR & GRILL

Sit down with great beer or cool cocktail and a juicy plate of ribs, burgers, pulled pork and more. The Boneyard specializes in BBQ and American cuisine.

560 Pine Knot Ave, Big Bear Lake, 909-878-0401

AMANGELA'S SANDWICH & BAGELS

Dine on freshly made sandwiches, soups, and energy packed smoothies. The vegan and vegetarian options are abundant and quality is guaranteed.

40729 Village Dr, Big Bear Lake, (909) 878-0015

AZTECA GRILL

Baja style food with dishes full of flavor & home style recipes.

40199 Big Bear Blvd, Big Bear Lake, 909-866-2350

ROYAL THAI BISTRO

In the heart of the Village, Royal Thai Bistro serves up flavorful curries and traditional Thai dishes such as Tom

Yum Soup, Pad Thai and more.

40766 Village Dr, Big Bear Lake, 909-866-2808

SANTANA MAVERICKS BAR & GRILL

Breathtaking view as you enjoy our specially crafted cuisine. 41072 Big Bear Blvd, Big Bear Lake, (909) 878-0047

TEDDY BEAR RESTAURANT

Our home style cooking is a Big Bear visitor favorite. We make all of our menu items from scratch and our homemade pies you can smell baking when you walk in.

583 Pine Knot Ave, Big Bear Lake, 909-866-5415

DANKS DONUTS

The real breakfast of champions in Big Bear Lake. 42612 Moonridge Rd, Big Bear Lake, (909) 547-6053

Places to Eat and Drink

BIG BEAR BAR & GRILL

We have awesome comfort food where we combine traditional preparations with local ingredients, for dishes that are authentic to both their Spanish origins and California settings. 42164 Moonridge Rd, Big Bear Lake, (909) 878-0802

DYNASTY

DYNASTY in Big Bear serves delicious asian cuisine. We provide chinese, szechwan Manderin style (hot & spicy) food, and Mongolian BBQ Grill style.
40989 Big Bear Blvd, Big Bear Lake, 909-866-7887



HACIENDA GRILL

Inspired by the everyday family cooking that we grew up with, you'll feel at home while savoring a great Mexican meal in our casual and relaxed dining room. 41787 Big Bear Blvd, Big Bear Lake, 909-866-8667.

NOTTINGHAM'S TAVERN

California Cuisine featuring steak, hamburgers, salads, seafood, and pasta specialties.
40797 Big Bear Blvd, Big Bear Lake, 909-866-4644.

STILLWELL'S RESTAURANT

Order up your favorite cut of steak or squeeze a lemon over that seafood dish you've been craving, while the swanky Stillwell's Lounge takes care of your wine and spirits. 40650 Village Drive, Big Bear Lake, 909-866-3121

CAFE CREPE

Serving authentic French crêpes (sweet and savory options), gourmet organic coffee, and espresso drinks.
41003 Big Bear Blvd, Big Bear Lake, 909-878-0460

CAPTAIN'S ANCHORAGE

Since 1947 Captain's Anchorage has been serving the finest cuisine on the mountain. Our place will set you back in time with our quaint tavern style atmosphere. 42148 Moonridge Way, Big Bear Lake, (909) 866-3997

EL JACALITO GRILL

This family owned and operated restaurant serves traditional Mexican dishes made from scratch and using only the finest ingredients.
535 Pine Knot Ave, Big Bear Lake, 909-866-3537

GET THE BURGER

Made with the freshest ingredients, garden fresh veggies, always using 100% pure home grown beef, our burgers are the best in town.
42151 Big Bear Blvd, Big Bear Lake, (909) 866-8800

GRIZZLY MANOR CAFE

The best breakfast in Big Bear Lake along with an entertaining cook and owner that serves the heartiest servings in Big Bear Lake will keep you coming back.
41268 Big Bear Blvd, Big Bear Lake, (909) 866-6226

Places to Eat and Drink

NORTH POLE FUDGE CO.

Offering the finest pastries and sweets. Chocolate, hot chocolate, fudge, pretzels dipped in all sorts of sweets, Oreos cookie crumbs the list goes on. 618 Pine Knot Ave, Big Bear Lake, 909-866-7622

WYATT'S GRILL & SALOON

Wyatt's Grill and Saloon is truly the simple place where the good folks of Big Bear gather! We specialize in comfort food with an attitude. 42900 Big Bear Blvd, Big Bear Lake, 909-585-3000

COUNTRY KITCHEN

The food is always fresh, the smiles stretch a country mile and breakfast can be any time of the day. 39904 Big Bear Blvd, Big Bear Lake, 909-878-0364

STELLA LUNA

Stella Luna is an organic scratch kitchen. Their focus is on healthy ingredients, fresh food, and sustainability. 40696 Village Dr, Big Bear Lake, 909-366-0261

THE BARNSTORM RESTAURANT

From breakfast to brunch every day, to gourmet dinners on the weekends and live music Saturdays, the Barnstorm is it. Watch planes take off down the runway and helicopters land while enjoying your own drink flight and a beautiful mountain backdrop. 501 W Valley Blvd, Big Bear, 909-585-9339

MAGGIO'S PIZZA

Our food is baked in Brick Deck Ovens prepared with our unique time honored family recipes. Come in to try our delicious pizzas, calzones, pasta dishes, sandwiches salads and more. 42160 Big Bear Blvd, Big Bear Lake, 909-866-8815

JASPERS BBQ

BBQ food, beer & wine located right across from the Village Theater. Local Big Bear family-run eatery serving BBQ, sandwiches & southern treats. 607 Pine Knot Ave, Big Bear Lake, (909) 866-2434

FRUSION JUICE & COFFEE BAR

Juice, Coffee, Smoothie, Avocado Toast, Acai Bowls. Located in Big Bear Village, they have a healthy open air environment on their outdoor patio. 40700 Village Dr, Big Bear Lake, 909-878-0881

572 SOCIAL KITCHEN

Their large outdoor patio with fire pits and bar seating go unmatched. Live entertainment every weekend and a large bar selection and booth seating inside. Burgers, Sandwiches, Artisan Pizzas, Poke, Salads and more. 572 Pine Knot Ave, Big Bear Lake, 909-878-0307





Places to Eat and Drink

THE PINES TAVERN

With live music almost every day and perhaps the best view of the lake, the Pines Tavern is a great place to enjoy a cocktail and see the sunset.
330 Alden Rd, Big Bear Lake, 909-878-0506

THE PINES LAKEFRONT

The Pines offer a unique menu, and a wonderful fine dining experience.
350 Alden Rd, Big Bear Lake, 909-866-5400

NORTH SHORE CAFE

Enjoy tasty meals in a comfortable, casual café setting. We do not serve premade or prepackaged food and our meals are prepared with the highest quality produce, cheeses, seafood, meats, and herbs. 39226 N Shore Dr, Fawnskin, 909-866-5879

OLD COUNTRY INN

We are open for breakfast and dinner with our original family recipe German cuisine that has been passed down for generations.
41126 Big Bear Blvd, Big Bear Lake, 909-866-5600

PEPPERCORN GRILLE

The Peppercorn Grille has a beautiful dining room with cozy private booths and tables with awesome views of the Big Bear Village. The open air patio is a perfect place to enjoy a drink or a glass of wine as you people watch.
553 Pine Knot Ave, Big Bear Lake, 909-866-5405

SONORA CANTINA

Family owned and operated, we serve all of your favorite Mexican dishes at very affordable prices. With vibrant decor and friendly service, Sonora Cantina is the perfect place for a family night out. 41144 Big Bear Blvd, Big Bear Lake, 909-866-8202

SISTER MY SISTER BAKE SHOP

The bakery is known for its elegant and delicious selection of freshly baked sweet treats and custom cakes. The daily menu consists of cupcakes, brownies, cookie sandwiches, cinnamon rolls and more.
40191 Big Bear Blvd, Big Bear Lake, 909-878-0878

SWEET BASIL BISTRO

Our Italian themed menu offers Steaks, Grilled Salmon, House made Pasta's, Pesto stuffed Chicken Breast and Meatloaf. We also host a fabulous Sunday Brunch.
40629 Big Bear Blvd, Big Bear Lake, 909-866-9212

OAKSIDE RESTAURANT & BAR

Warm, rustic stop with indoor & outdoor seating for American dishes, plus beer, wine & cocktails.
40701 Village Dr, Big Bear Lake, 909-866-5555



Before You Go



FRIDGE/FREEZER/PANTRY

Please empty the fridge/freezer and pantry of your items.



DISHES

Please place all dirty dishes in dishwasher and run.



TRASH

Please throw all trash into outside trash bins.



LIGHTS

Please turn off all lights.



THERMOSTAT

In winter, please set heating thermostat to 55 degrees.



HOT TUB

Please place cover on hot tub.



DOORS & WINDOWS

Please lock all exterior doors and windows.

Safe travels & come again soon!



Thank you!

WE HOPE YOU ENJOY YOUR STAY